

# STREETSMARTV2™

## Quick Start Configuration & Installation Guide

### MATERIALS

**MATERIALS INCLUDED:**

- STREETSMARTV2 Device
- STREETSMARTV2 Antenna
- Ethernet Cable
- AC Power Cable
- Footer (Optional)

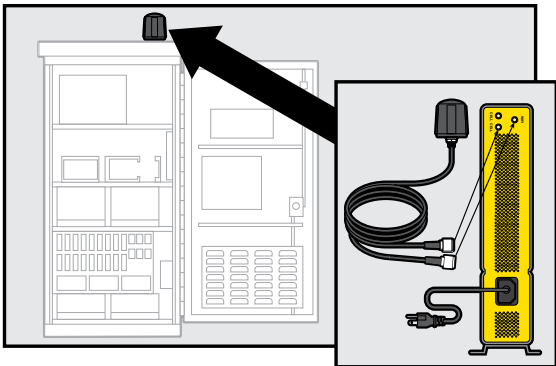
**MATERIALS NEEDED:**

- 1/2” Drill Bit
- Drill
- Laptop or Smartphone for configuration
- 17 mm Wrench
- Interface Cable (TS1, TS2 Cables sold separately)

### CABINET INSTALLATION



**IMPORTANT:** Wi-Fi signals cannot penetrate cabinet walls. Antenna must be mounted on the outside of the cabinet.



|              |           |
|--------------|-----------|
| Serial:      | 8651023   |
| Status:      | Online    |
| Firmware:    | 6.2.1     |
| Description: | SS2-10023 |

1. Drill a 1/2” hole in the top of the traffic cabinet.
2. Feed leads through new hole and mount antenna on top of cabinet.
3. Connect both **CELL** antenna leads to the **CELL** ports. Connect the **WIFI** antenna lead to the **WIFI** port.
4. Plug STREETSMARTV2 into a protected, non-GFCI outlet.
5. For TS1, connect wiring according to the TS1 Wiring Index. For TS2, plug in SDLC cable.
6. Locate your device serial number on the STREETSMARTV2 device. Type the following link into any web browser: <https://strtsm.art/>.
7. Enter the device’s SS2 serial number and click the “Status”. An “Online” status confirms the device is communicating to the GRIDSMART Cloud through the internal modem.

### DATA COLLECTION VERIFICATION

1. Configure your PC to automatically obtain an IP address (DHCP) and connect directly to the STREETSMARTV2 device’s **LAPTOP** port with the provided ethernet cable.
2. Launch a web browser (Chrome or Firefox, not Internet Explorer) and enter the following IP address into the navigation bar: 192.168.150.10.
3. Enter the default password (temppwd) and press enter.
4. Extend the “Real-Time Data” tab. Within 2-5 minutes, the tab will begin to populate with new data records. See example on the following page.

# STREETSMARTV2™

## Quick Start Configuration & Installation Guide

▼ Real-Time Data

| Collection Time   | Timestamp     | MAC Address                      | Strength | Type |
|---|---------------|----------------------------------|----------|------|
| Wed Jan 29 2020 16:03:04 GMT-0500 (Eastern Standard Time) | 1580331784939 | dd6e593bc53f9a0e6051deac25cc3dec | -86      | Wifi |
| Wed Jan 29 2020 16:03:04 GMT-0500 (Eastern Standard Time) | 1580331784901 | 7a764446c5b0a7fb4d6e9f77cdc34766 | -85      | Wifi |
| Wed Jan 29 2020 16:03:04 GMT-0500 (Eastern Standard Time) | 1580331784152 | 38db8a07634b47f6759fc00180c3e4f6 | -86      | Wifi |
| Wed Jan 29 2020 16:03:04 GMT-0500 (Eastern Standard Time) | 1580331784128 | 1315d7c75c1b750d603afa7a7bfd2bce | -81      | Wifi |
| Wed Jan 29 2020 16:03:04 GMT-0500 (Eastern Standard Time) | 1580331784083 | 1315d7c75c1b750d603afa7a7bfd2bce | -83      | Wifi |
| Wed Jan 29 2020 16:03:04 GMT-0500 (Eastern Standard Time) | 1580331784082 | 1315d7c75c1b750d603afa7a7bfd2bce | -83      | Wifi |
| Wed Jan 29 2020 16:03:04 GMT-0500 (Eastern Standard Time) | 1580331784078 | 1315d7c75c1b750d603afa7a7bfd2bce | -85      | Wifi |
| Wed Jan 29 2020 16:03:04 GMT-0500 (Eastern Standard Time) | 1580331783890 | 1315d7c75c1b750d603afa7a7bfd2bce | -82      | Wifi |

Example of “Real-Time Data” Tab

## NETWORK CONFIGURATION

**NOTE:** If using an agency network, ensure step 1 is configured on the network before installing your STREETSMARTV2 system:

1. Configure Internet access on ports 80 (HTTP), 443 (HTTPS), 53 (DNS), and 123 (NTP).

2. While still connected to the device’s **LAPTOP** port, expand the “Network” tab, set the appropriate network settings, and click on “Apply Changes.” The system will automatically reboot after applying network settings.
3. Connect STREETSMARTV2 to your network and wait for reboot to complete.

4. Using the device’s new network IP address, log back into the device webpage with the browser and the temporary password to run network tests.

5. Expand the “Cellular Data Settings” tab and click the “Disable Modem” Button.

6. Select the “Network” tab and click “Run Network Tests.”

7. A dialog box will confirm the device’s connectivity.

## CABINET DATA COLLECTION

1. Log into **https://strtsm.art/** using a web browser.

2. In the search bar, type the SS2 serial number and click the “Configure” button. You will be directed to a configuration page for the device.

3. Follow the configuration prompts on the page to complete configuration.

STREETSMARTV2

To check the status or configure your STREETSMARTV2, enter the last 5 digits of the serial number found on the back of the device.

Serial Number

SS2-

10023

Status

Configure

**FCC:** This device complies with part 15 of the FCC Rules. Operation is subject to the following two conditions: (1) This device may not cause harmful interferences; (2) This device must accept any interference received, including interferences that may cause undesired operation.