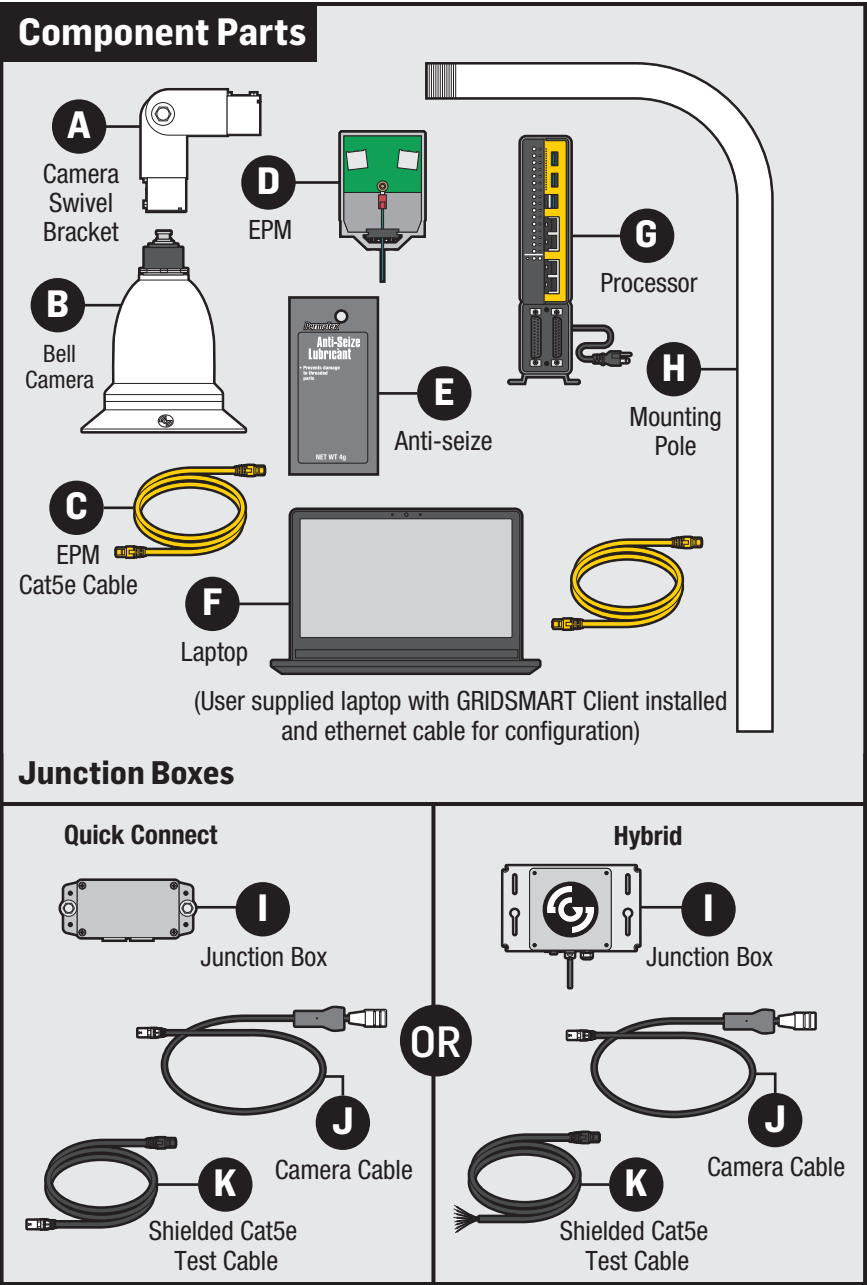


**GRIDSMART®**

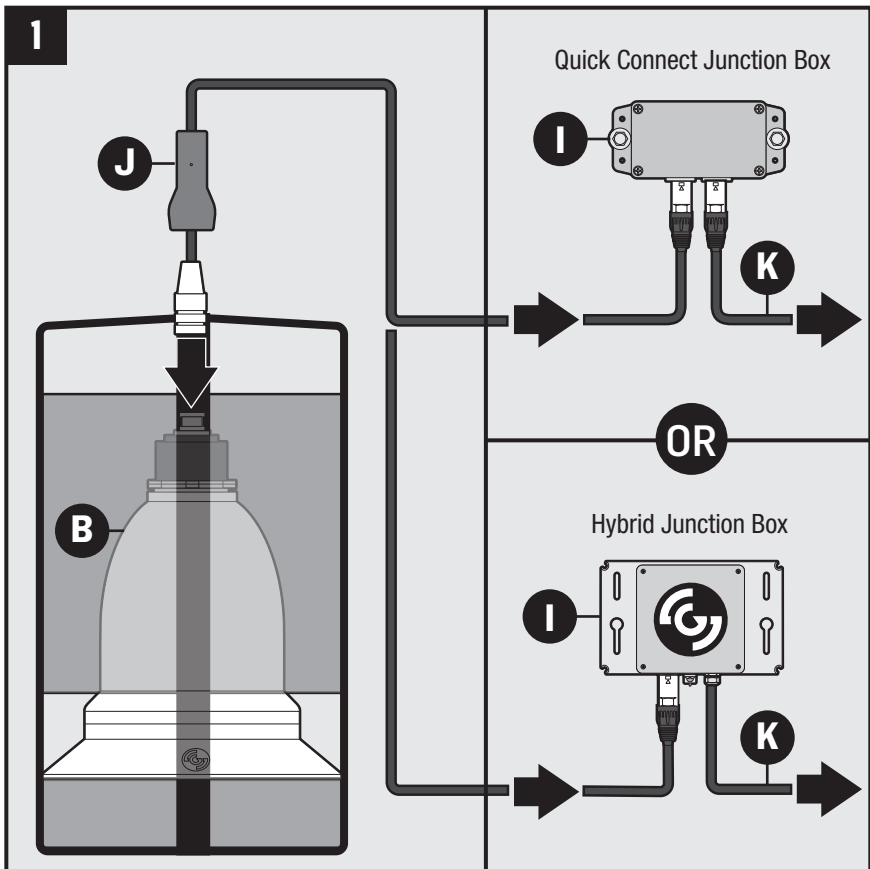
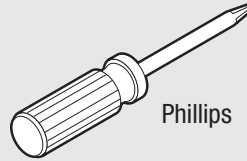
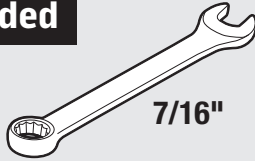


# GRIDSMART®



# Out of the Box

## Tools Needed



With camera in foam packaging, connect cable (J) to camera (B). Carefully line up key, press and twist. Connect remaining end of cable (J) to junction box (I). Connect shielded Cat5e cable (K) to junction box (I).

**NOTE:** See specific junction box instruction sheet for detailed installation.

Diagram 2 illustrates the connection of the power supply and network cables. A power cable (K) is plugged into the power input (G) of the device. A yellow Ethernet cable (C) is plugged into the Ethernet port (F) of the device. The power source is indicated as 'To power source'.

4

# Out of the Box

3



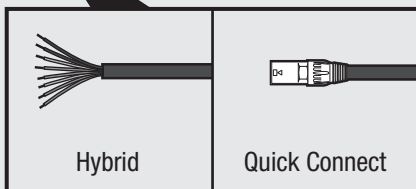
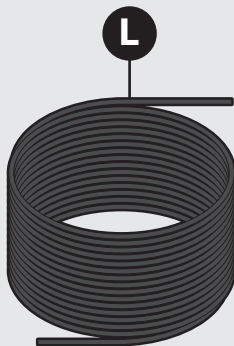
Launch GRIDSMART Client on laptop (F).  
Select factory default site card and verify  
image. Image will be dark if left in the foam.

After successful  
equipment test,  
disconnect cables  
to junction box, EPM,  
processor and laptop.  
Leave cable connected  
to camera.  
Disconnect processor (G)  
from power source.

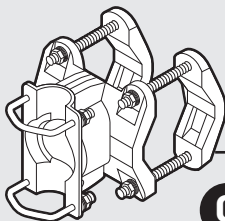
# GRIDSMART®

## Items Needed

Gel-filled, shielded,  
burial grade  
Cat5e cable

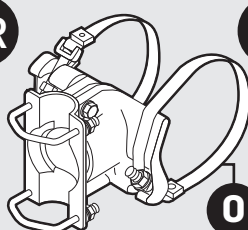


Mounting Bracket  
Tenon Mount



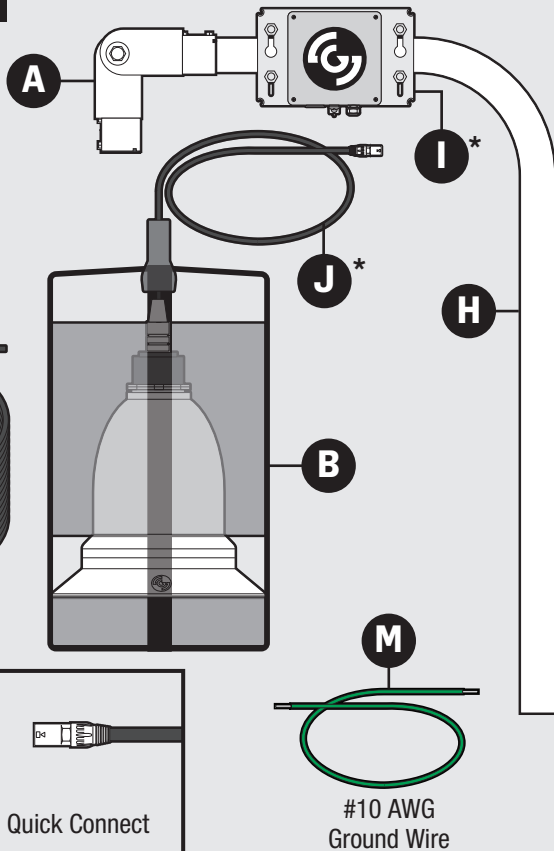
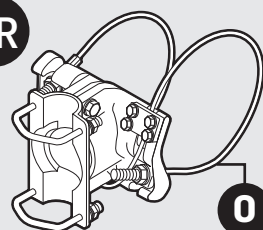
OR

Mounting Bracket  
Band Mount



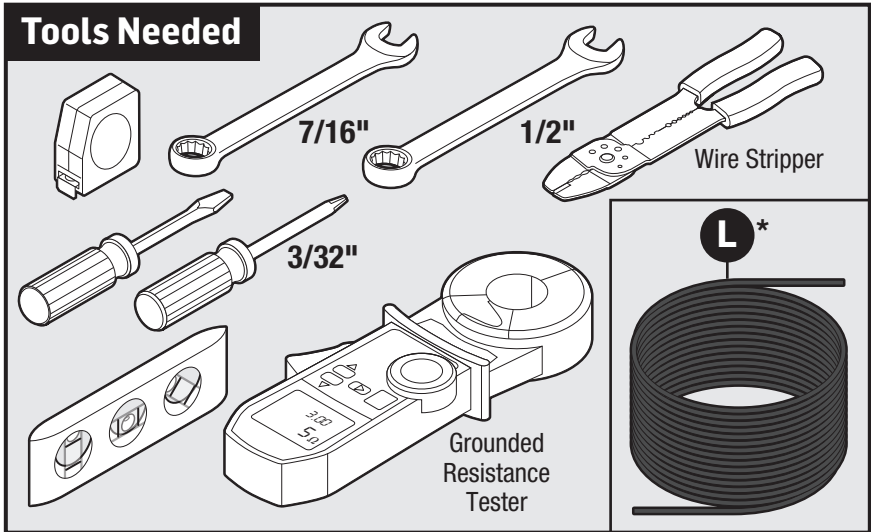
OR

Mounting Bracket  
Cable Mount

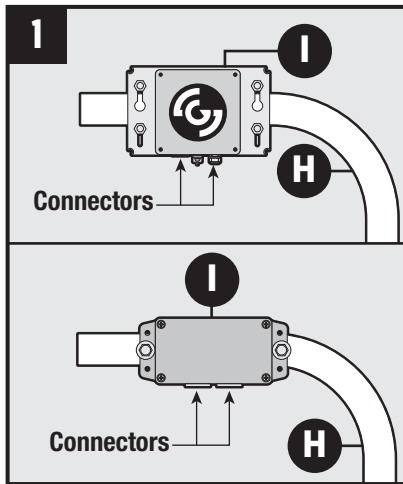


\*Hybrid junction box and cable shown.

# Above the Road

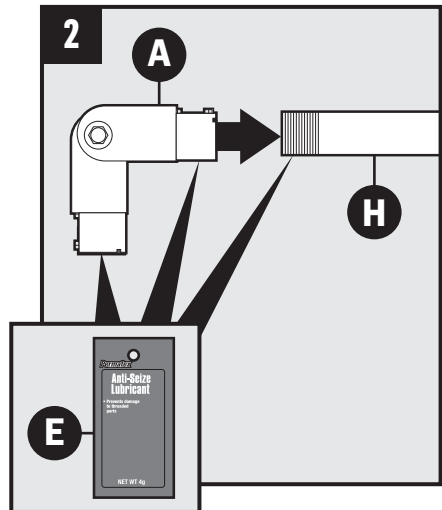


**\*NOTE:** Before proceeding to step 1, route gel-filled, shielded, burial grade Cat5e cable (**L**) from traffic cabinet to the camera mounting location.



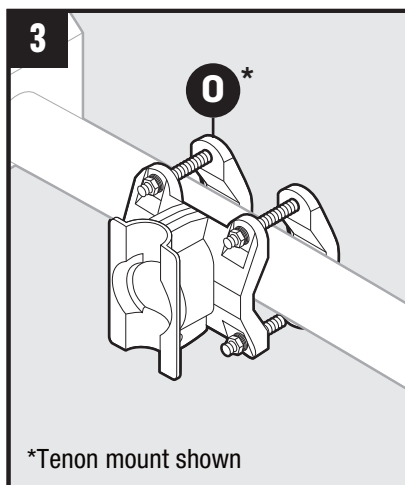
Attach hybrid or quick connect junction box (**I**) to camera pole (**H**). Ensure connectors are facing down.

**NOTE:** See specific junction box instruction sheets for detailed installation.

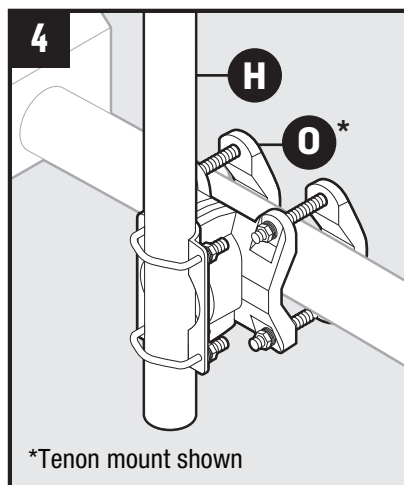


Apply anti-seize lubricant (**E**) to upper end of pole (**H**) and swivel bracket threads (**A**). Install swivel bracket (**A**) onto pole (**H**).

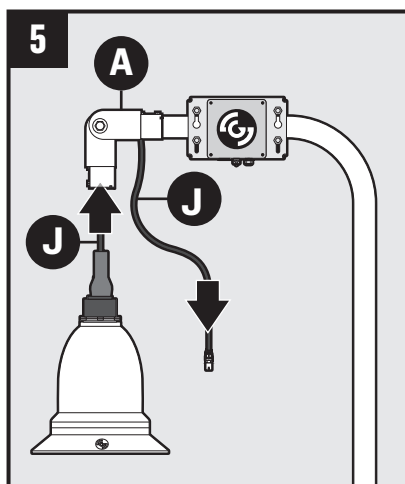
# GRIDSMART®



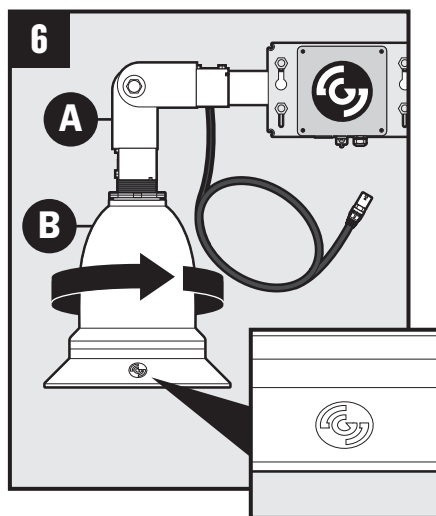
Install mounting bracket (O) onto a Luminaire, Mast Arm or other stationary structure. **NOTE:** See specific instruction sheets for detailed installation.



Install camera pole (H) with junction box and swivel bracket to mounting bracket (O). Angle mounting pole towards intersection.



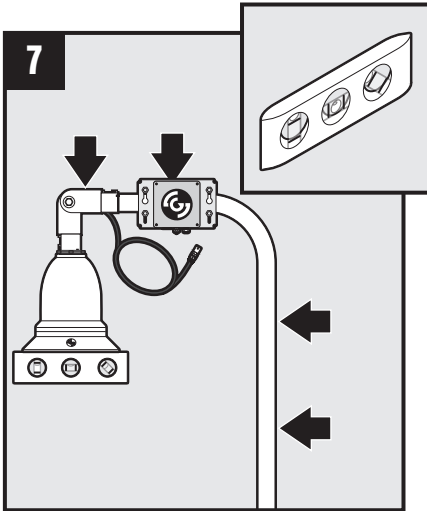
After removing camera from packaging, route camera cable (J) through swivel bracket (A).



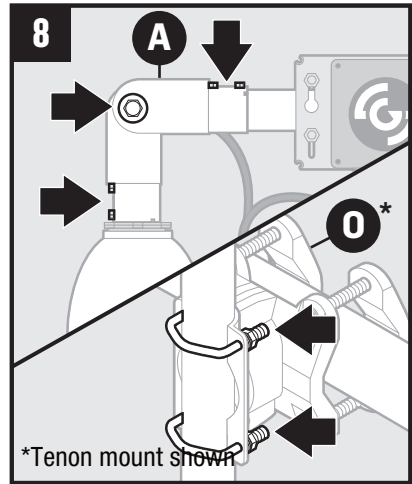
Tighten camera (B) to swivel bracket (A). Orient small 'G' logo so that no approach is cropped (usually toward a corner of the intersection).



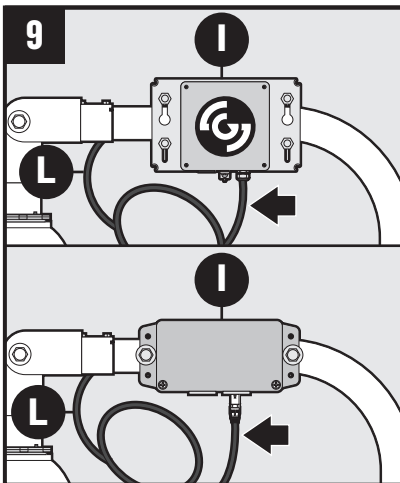
# Above the Road



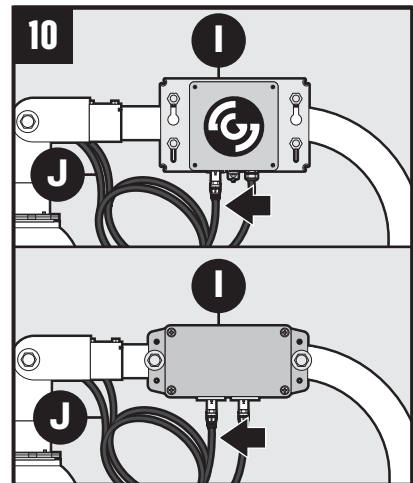
Level the camera on both planes.



Tighten bolts on swivel bracket (A) and on mounting bracket (O).

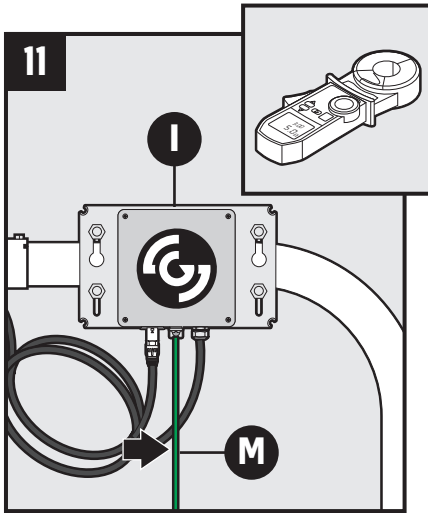


Route Cat5e cable (L) through mounting pole, and out swivel bracket, then connect to junction box (I). **NOTE:** See specific junction box instruction sheets for detailed installation.

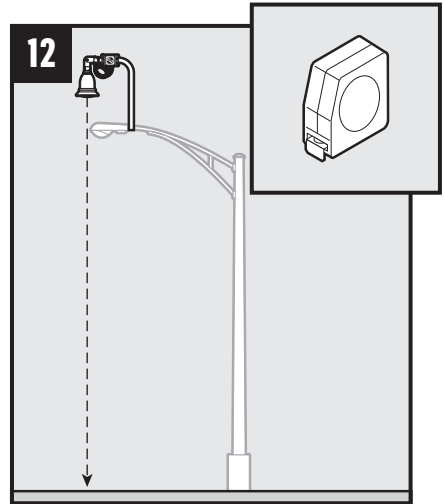


Connect camera cable (J) to junction box (I). **NOTE:** See specific junction box instruction sheets for detailed installation.

# GRIDSMART®



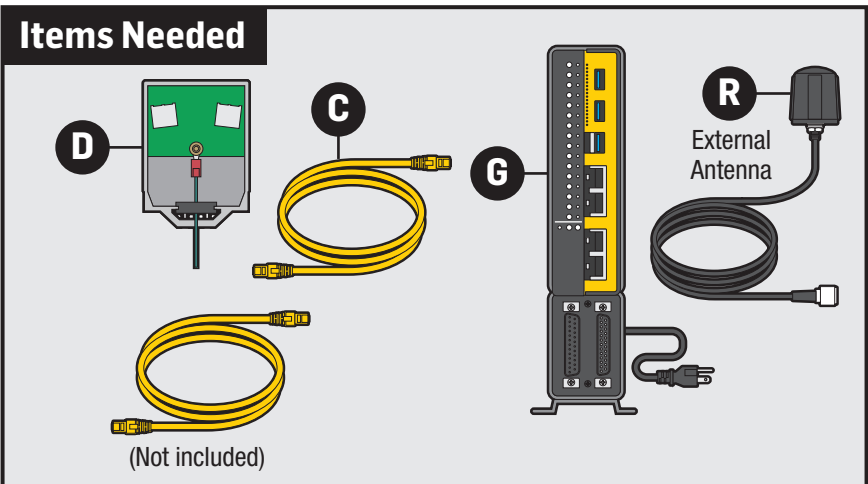
Attach #10 AWG ground wire (M) to junction box (I) grounding lug. Verify <5 Ohms resistance to ground.



## VERY IMPORTANT

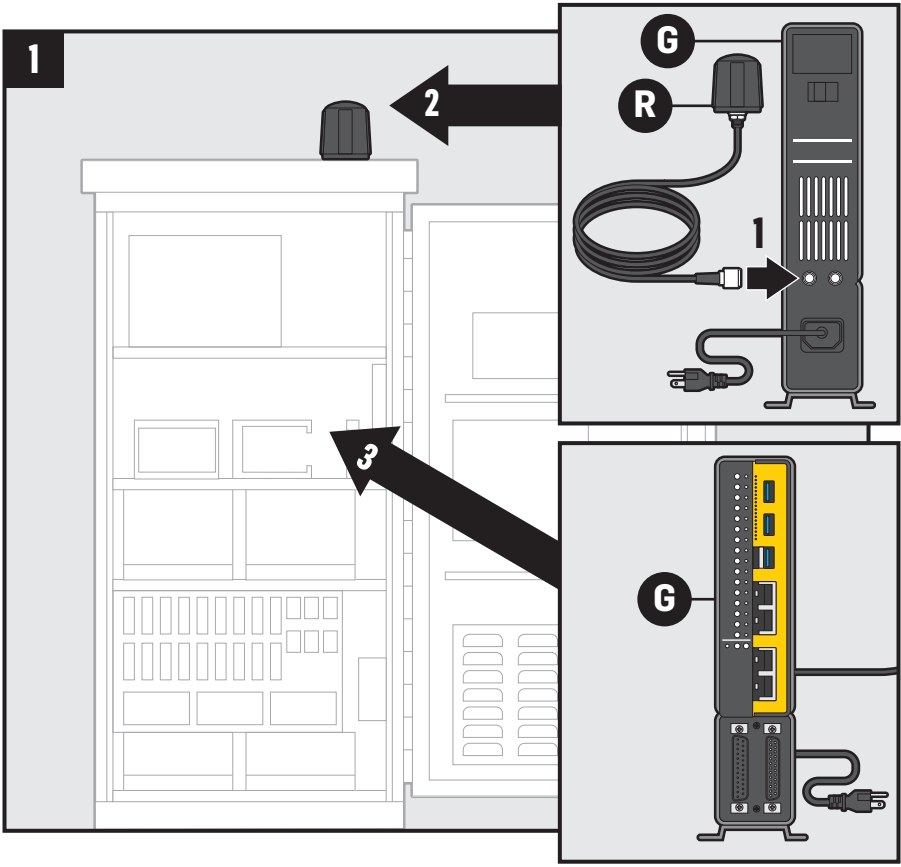
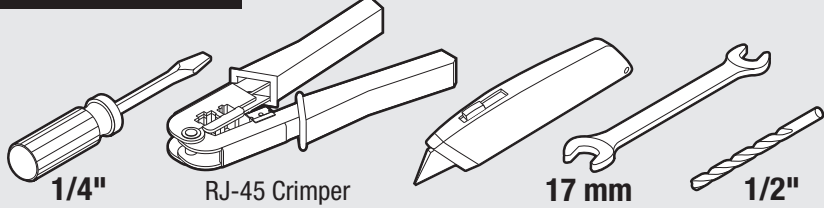
Measure height of camera. Record the height for use later to set up system.

## Items Needed



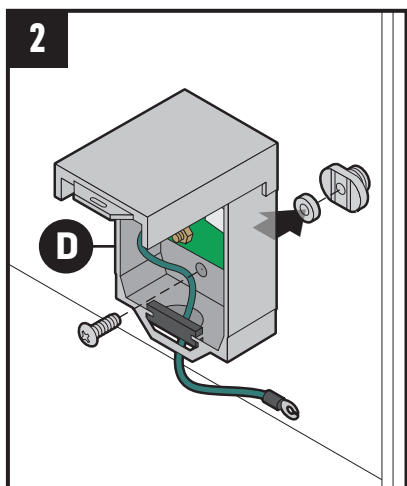
# Above the Road & In the Cabinet

## Tools Needed

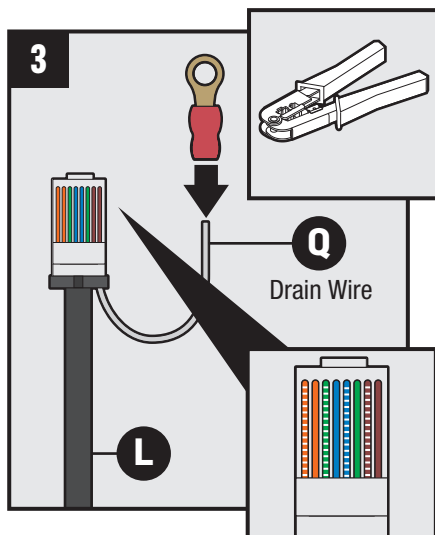


**VERY IMPORTANT** Mount antenna (R) to top of the cabinet and connect the CELL antenna lead (R) to the female connector on the back of the processor (G). Install the processor (G) into the traffic cabinet.

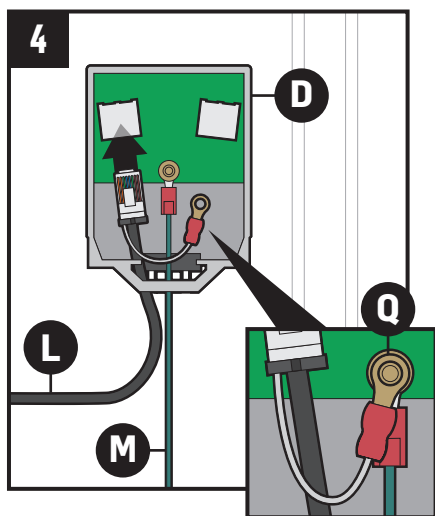
# GRIDSMART®



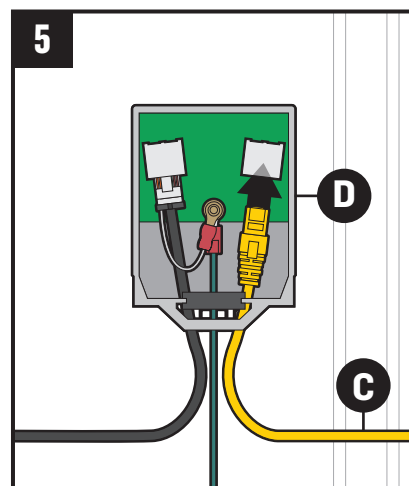
Install EPM on cabinet DIN rail on the opposite side from the power distribution. Cut along the rubber grommet "X".



Crimp an RJ-45 to the end of the Cat5e field cable (L) and connect the ring terminal to the cable drain wire. Verify good crimp on drain wire ring terminal.

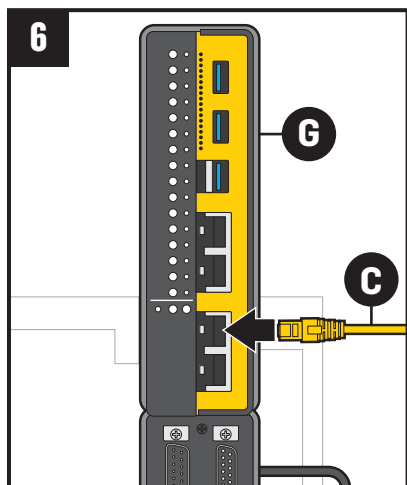


Connect field cable (L) to the EPM (D) "line" port. Connect the drain wire ring terminal (Q) to the EPM ground (M) to eliminate signal noise and EMI.

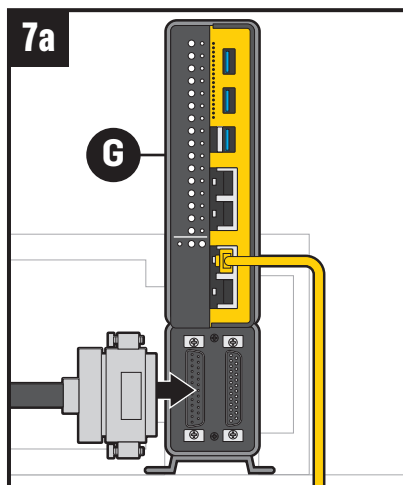


Connect supplied Cat5e patch cable (C) to the EPM (D) "equipment" port.

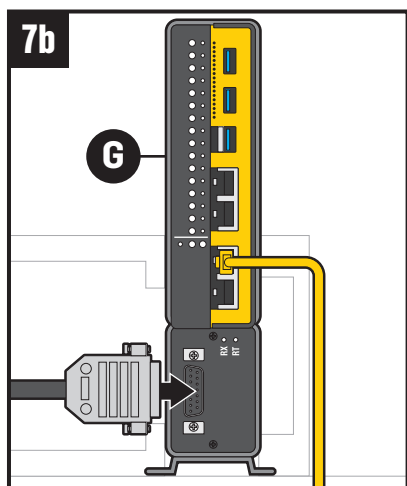
# In the Cabinet



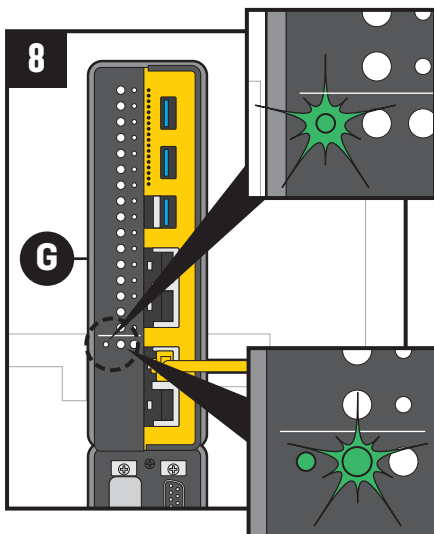
Connect supplied Cat5e (C) to the processor (G) “camera” port.



Connect TS1 wiring harness to processor (G).

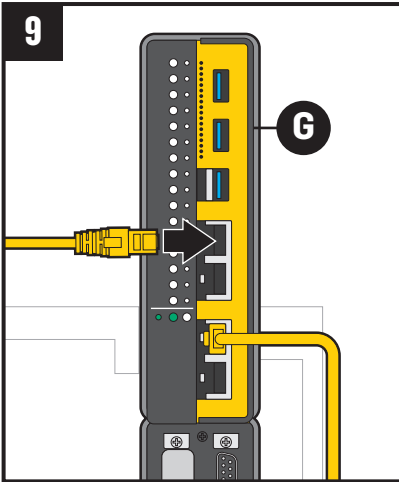


Connect TS2 or ITS wiring harness to processor (G).

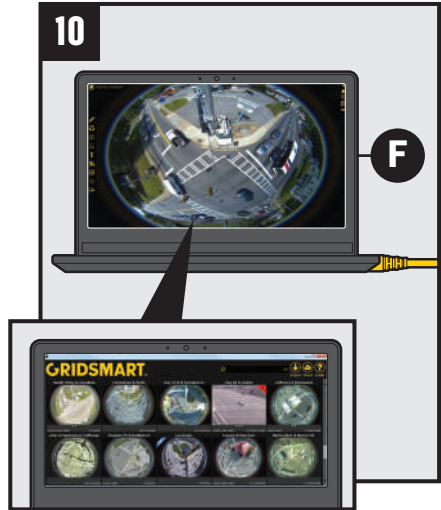


Power on processor (status light turns green in 2-3 minutes, camera status light turns green in 5-7 minutes).

# GRIDSMART®

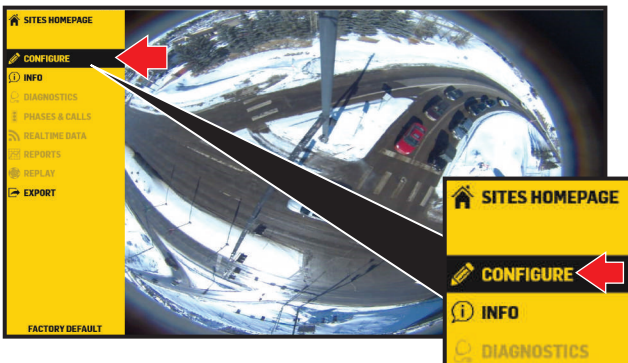


Connect laptop to the “laptop” port on the processor (G) with a second Cat5 cable (not included).



Launch GRIDSMART Client on laptop (F). Select factory default site card and verify image.

## Client Software



1. Click the “Configure” icon.

# In the Cabinet & With the Client

Location

Postal Code: **80408** City: **Silverthorne** Country: **USA**

Street 1: **Blue River** County: Latitude: **39.63**

Street 2: **I-70** State: **CO** Longitude: **-100.06**

Matrix: ☐ Left Side Driving: ☐

< Back Next >

**2.** Enter the postal code or lat/long and Street 1 and Street 2 names.

Control

Cabinet Type: **T61** **T52**

SCATS: **On** **Off**

Max Recall Default: **On** **Off**

Hold Stationary: ☐ 0.00

< Back Next >

**3.** Verify the control settings.

Date/Time

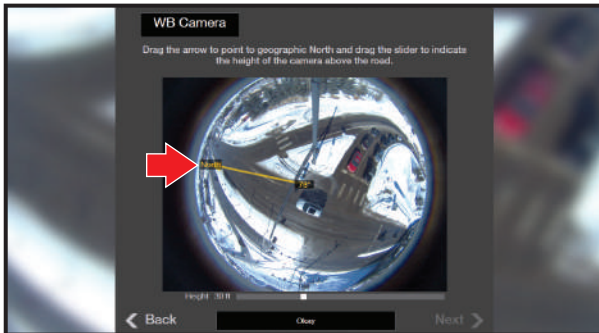
Date and Time: **Thursday, April 13, 2017 8:30:58 AM**

Time Zone: **(GMT-07:00) Mountain Time (MST & Daylight)**

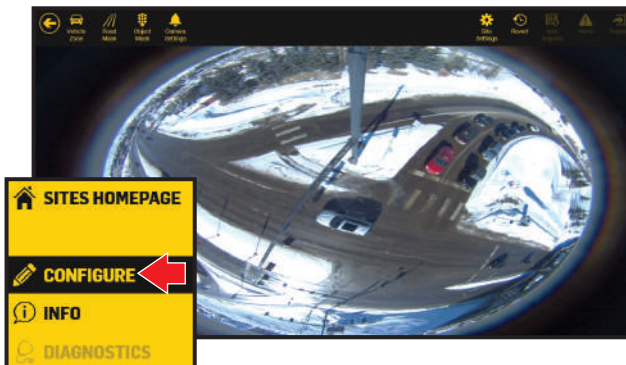
< Back Next >

**4.** Set Date/Time and Region.

# GRIDSMART®



5. Drag the “North” label to point to true north.



6. Click “Configure” again to setup the intersection.

## FCC

This device complies with part 15 of the FCC Rules. Operation is subject to the following two conditions: (1) This device may not cause harmful interference, and (2) this device must accept any interference received, including interferences that may cause undesired operation

## GRIDSMART Support

866.652.5347

[gridsmart.com/support](http://gridsmart.com/support)

Made in USA